

arc edition®
performance flooring
by Balta

**SERVICE
COLLECTION 2013-2014**

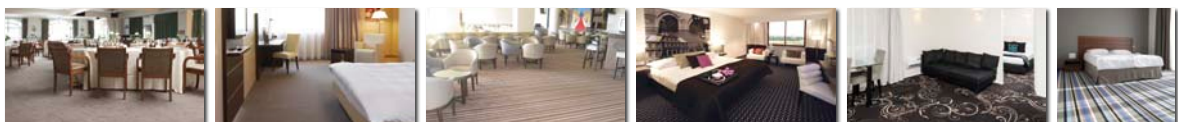


TABLE OF CONTENT



arc edition® defines innovative high-quality broadloom carpet for commercial environments, bringing together the best of Balta Broadloom, ITC and Domo Floorcoverings.

arc edition® offers a website and ipad tool that enable flooring professionals, architects, designers and specifiers to explore the creative potential of commercial carpet.

This collection gives you the power to make decisions on the colour, design and texture of carpet for your project.

arc edition® provides a wide-choice of in-stock textile floor-coverings suitable for use in demanding commercial environments with the Service collection, as well as the freedom and unlimited potential of Tailor Made bespoke carpet creations.

visit: www.arcedition.com

- ➔ Selection of high-quality in-stock commercial carpet
- ➔ Styles and colours for wide-ranging applications
- ➔ Access a comprehensive in-stock programme
- ➔ Selection of high-technology Chromojet printed carpet
- ➔ Possibility to submit personalised patterns or colours

Product overview	04 - 05
Altona	06
Altro	07
Apollo	08
Aristocrat	09
Bach	10
Chambord	11
Fortesse	12
Forza	13
Frascati	14
Fresco	15
Maestro	16
Master	17
Mozart	18
Novastripe	19
Novaweave	20
Optima	21
Prominent	22
Quartier	23
Quartz new	24
Ravel	25
Rivoli	26
Schubert	27
Splendid	28
Spontini	29
Strauss	30
Tweed	31
Verdi	32
Vivaldi	33
Chromojet	34
App - website	35
Sustainability statement arc edition	36 - 37
Certificates	38
Maintenance	39
Quality symbols	40 - 41
Installation guide	42 - 43

OVERVIEW

PRODUCT	BACK	TYPE	PILE 100%	PILE WEIGHT G/M²	NUMBER OF KNOTS/M²	ASPECT (DESIGN/COLOR)			
						Uni	Tone-in Tone (Mottled)	Patterned	With Structure

PERFORMANCE

Altona	UX	Plain velours	PA	720	400 000	Y			
Altro	AB	Cross-over-cut	PA	900	335 000		Y		
Apollo	AB	Cross-over-cut	PA	420	216 000		Y		
Aristocrat	AB	Tip sheared patterned	PA	1100	221 000			Y	Y
PM Bach	AB	Patterned saxony	PA	900	170 000			Y	
Chambord	AB/UX	Patterned velours	PA	630	378 000			Y	
Fortesse	AB	Cross-over-cut	PA	730	220 000		Y		
Forza	CRES	Needlefelt	PP	900	not relevant		Y		
Frascati	AB	Patterned velours	PA	630	421 000				Y
Fresco	AB	Patterned velours	PA	630	421 000				Y
Maestro	AB	Level loop	PA	460	205 000		Y		
Master	AB	Level loop	PA	460	205 000		Y		
PM Mozart	AB	Patterned saxony	PA	900	170 000			Y	
Novastripe	AB	Structured loop pile	PA	660	224 500				Y
Novaweave	AB	Structured loop pile	PA	660	224 500				Y
Optima	AB	Cross-over-cut	PA	750	256 000		Y		
Prominent	AB	Plain saxony	PA	1150	209 000	Y			
Quartier	AB	Level loop	PA	480	213 000		Y		
Quartz new	AB	Level loop	PA	540	236 000		Y		
PM Ravel	AB	Patterned saxony	PA	900	170 000			Y	
Rivoli	AB	Structured loop pile	PA	660	224 500				Y
PM Schubert	AB	Patterned saxony	PA	900	170 000			Y	
Splendid	AB	Structured loop pile	PA	1020	221 000				Y
Spontini	AB	Structured loop pile	PA	1100	221 000				
PM Strauss	AB	Patterned saxony	PA	900	170 000			Y	
Tweed	AB	Structured loop pile	PA	680	225 000				Y
PM Verdi	AB	Patterned saxony	PA	900	170 000			Y	
PM Vivaldi	AB	Patterned saxony	PA	900	170 000			Y	

CHARACTERISTICS											SUITABLE						
Prodis/GUT Certificate	ABZ/ DIBt Certific- ate	émiss. Air intér. A +	UPEC Certif.	TüV ok for Allergics	Anti Static	Floor Heat- ing	EN 1307				Office	Shops	Hotel			Resto	Homes
							EN- Class	Castor Chair	Stairs	CE-fire Class			Rooms	Cor- ridors	Public Areas		

DBC040FB	Y	Y	U3P3	Y	Y	Y	32	contract	domestic	C _{fl} -s1	Y	Y	Y	Y		Y	Y
3491BF15	Y	Y		Y	Y	Y	33	contract	contract	C _{fl} -s1	Y	Y	Y	Y	Y	Y	Y
3B9A8F46	Y	Y		Y	Y	Y	32	contract	contract	C _{fl} -s1		Y	Y			Y	Y
to be confirmed	Y	Y		Y	Y	Y	32	contract	contract	C _{fl} -s1	Y	Y	Y	Y	Y	Y	Y
B8C23F74	Y	Y	U3P3	Y	Y	Y	32	contract	contract	C _{fl} -s1	Y	Y	Y	Y	Y	Y	Y
48FC1709	Y	Y	U3P3	Y	Y	Y	32	contract	contract	C _{fl} -s1	Y	Y	Y	Y		Y	Y
4F6BE834	Y	Y	U3P3	Y	Y	Y	32	contract	contract	C _{fl} -s1	Y	Y	Y	Y		Y	Y
7532644B	Y	Y				Y	33	contract	contract	C _{fl} -s1	Y	Y	Y	Y		Y	Y
to be confirmed	Y	Y		Y	Y	Y	33	contract	contract	C _{fl} -s1	Y	Y	Y	Y	Y	Y	Y
to be confirmed	Y	Y		Y	Y	Y	33	contract	contract	C _{fl} -s1	Y	Y	Y	Y	Y	Y	Y
4072B6DC	Y	Y		Y	Y	Y	33	contract	contract	C _{fl} -s1	Y	Y	Y	Y	Y	Y	Y
C7C27C1C	Y	Y	U3P3	Y	Y	Y	33	contract	contract	C _{fl} -s1	Y	Y	Y	Y	Y	Y	Y
B8C23F74	Y	Y	U3P3	Y	Y	Y	32	contract	contract	C _{fl} -s1	Y	Y	Y	Y	Y	Y	Y
to be confirmed	Y	Y	U3P3	Y	Y	Y	32	contract	contract	C _{fl} -s1	Y	Y	Y	Y	Y	Y	Y
to be confirmed	Y	Y	U3P3	Y	Y	Y	32	contract	contract	C _{fl} -s1	Y	Y	Y	Y	Y	Y	Y
80E2C5AE	Y	Y	U3P3	Y	Y	Y	32	contract	contract	C _{fl} -s1	Y	Y	Y	Y		Y	Y
36B244E8	Y	Y	U3P3	Y	Y	Y	33	contract	contract	C _{fl} -s1	Y	Y	Y	Y	Y	Y	Y
83BED6CA	Y	Y		Y	Y	Y	32	contract	domestic	C _{fl} -s1			Y				Y
6F3A3864	Y	Y	U3P3	Y	Y	Y	32	contract	contract	C _{fl} -s1	Y	Y	Y	Y		Y	Y
B8C23F74	Y	Y	U3P3	Y	Y	Y	32	contract	contract	C _{fl} -s1	Y	Y	Y	Y	Y	Y	Y
B9CAC3E3	Y	Y	U3P3	Y	Y	Y	32	contract	contract	C _{fl} -s1	Y	Y	Y	Y		Y	Y
B8C23F74	Y	Y	U3P3	Y	Y	Y	32	contract	contract	C _{fl} -s1	Y	Y	Y	Y	Y	Y	Y
7F8C98EA	Y	Y		Y	Y	Y	32	contract	contract	C _{fl} -s1	Y	Y	Y	Y	Y	Y	Y
AABDAB3E	Y	Y		Y	Y	Y	32	contract	contract	C _{fl} -s1	Y	Y	Y	Y	Y	Y	Y
B8C23F74	Y	Y	U3P3	Y	Y	Y	32	contract	contract	C _{fl} -s1	Y	Y	Y	Y	Y	Y	Y
8E4C29C0	Y	Y		Y	Y	Y	32	contract	contract	C _{fl} -s1	Y	Y	Y	Y		Y	Y
B8C23F74	Y	Y	U3P3	Y	Y	Y	32	contract	contract	C _{fl} -s1	Y	Y	Y	Y	Y	Y	Y
B8C23F74	Y	Y	U3P3	Y	Y	Y	32	contract	contract	C _{fl} -s1	Y	Y	Y	Y	Y	Y	Y

ALTONA UX+



MANUFACTURING PROCESS:
Tufting 5/64" plain cut pile

PILE CONTENT: 100% PA IMPREL®

PRIMARY BACKING: Woven PP

SECONDARY BACKING: Ultratex Quick+

PILE WEIGHT: ca. 720 g/m²

TOTAL WEIGHT: ca. 1.670 g/m²

PILE HEIGHT: ca. 5 mm

TOTAL HEIGHT: ca. 9 mm

NUMBER OF KNOTS: ca. 400 000/m²

PERMANENTLY ANTISTATIC: <2 kV

SOUND INSULATION: ISO 140-8: ca 28 dB delta L

SOUND ABSORPTION ISO 354: ca 0.30 alpha w

THERMAL RESISTANCE: 0,15 m² K/W

LIGHT FASTNESS: 5-6

WATER RESISTANCE: 4-5

FIRE CLASS: Fireresistance C_{fl}-s1 only with full adhesion



ALTRO AB



MANUFACTURING PROCESS:
Tufting 1/10" cut pile COC

PILE CONTENT: 100% PA IMPREL®

PRIMARY BACKING: Woven PP

SECONDARY BACKING: Synthetic backing

PILE WEIGHT: ca. 900 g/m²

TOTAL WEIGHT: ca. 1.880 g/m²

PILE HEIGHT: ca. 3 mm

TOTAL HEIGHT: ca. 5 mm

NUMBER OF KNOTS: ca. 335 000/m²

PERMANENTLY ANTISTATIC: <2 kV

SOUND INSULATION: ISO 140-8: ca 24 dB delta L

SOUND ABSORPTION ISO 354: ca 0.20 alpha w

THERMAL RESISTANCE: 0,11 m² K/W

LIGHT FASTNESS: 5-6

WATER RESISTANCE: 4-5

FIRE CLASS: Fireresistance C_{fl}-s1only with full adhesion



APOLLO AB



MANUFACTURING PROCESS:

Tufting 1/10" cut pile COC

PILE CONTENT: 100% PA IMPREL®

PRIMARY BACKING: woven PP

SECONDARY BACKING: Synthetic backing

PILE WEIGHT: ca. 420 g/m²

TOTAL WEIGHT: ca. 1.600 g/m²

PILE HEIGHT: ca. 2 mm

TOTAL HEIGHT: ca. 4 mm

NUMBER OF KNOTS: ca. 216.000/m²

PERMANENTLY ANTISTATIC: <2 kV

SOUND INSULATION: ISO 140-8: ca 22 dB delta L

SOUND ABSORPTION ISO 354: ca 0.20 alpha w

THERMAL RESISTANCE: 0,09 m² K/W

LIGHT FASTNESS: 5-6

WATER RESISTANCE: 4-5

FIRE CLASS: Fireresistance C_{fl}-s1 only with full adhesion



ARISTOCRAT AB



MANUFACTURING PROCESS:

Tufting 1/10" structured loop pile printed Scroll / Tipsheared

PILE CONTENT: 100% PA IMPREL®

PRIMARY BACKING: non woven PES

SECONDARY BACKING: Synthetic backing

PILE WEIGHT: ca. 1.100 g/m²

TOTAL WEIGHT: ca. 2.220 g/m²

PILE HEIGHT: ca. 6 mm

TOTAL HEIGHT: ca. 8 mm

NUMBER OF KNOTS: ca. 221 000/m²

PERMANENTLY ANTISTATIC: <2 kV

SOUND INSULATION: ISO 140-8: ca 26 dB delta L

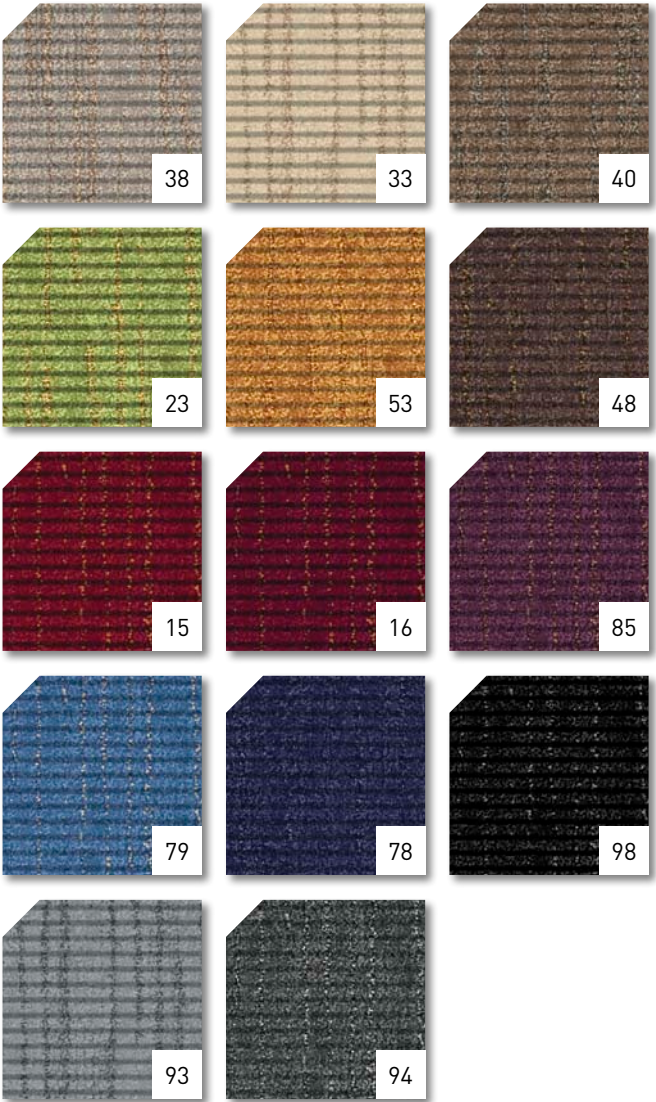
SOUND ABSORPTION ISO 354: ca 0.20 alpha w

THERMAL RESISTANCE: 0,09 m² K/W

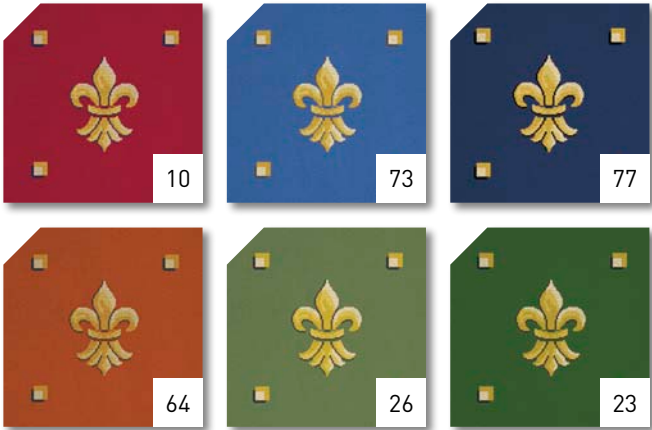
LIGHT FASTNESS: 5-6

WATER RESISTANCE: 4-5

FIRE CLASS: Fireresistance C_{fl}-s1 only with full adhesion



BACH AB



MANUFACTURING PROCESS:
Tufting 1/10" saxony

PILE CONTENT: 100% PA IMPREL®

PRIMARY BACKING: non woven PES

SECONDARY BACKING: Synthetic backing

PILE WEIGHT: ca. 900 g/m²

TOTAL WEIGHT: ca. 1.950 g/m²

PILE HEIGHT: ca. 5 mm

TOTAL HEIGHT: ca. 7 mm

NUMBER OF KNOTS: ca. 170 000/m²

PERMANENTLY ANTISTATIC: <2 kV

SOUND INSULATION: ISO 140-8: ca 24 dB delta L

SOUND ABSORPTION ISO 354: ca 0.20 alpha w

THERMAL RESISTANCE: 0,15 m² K/W

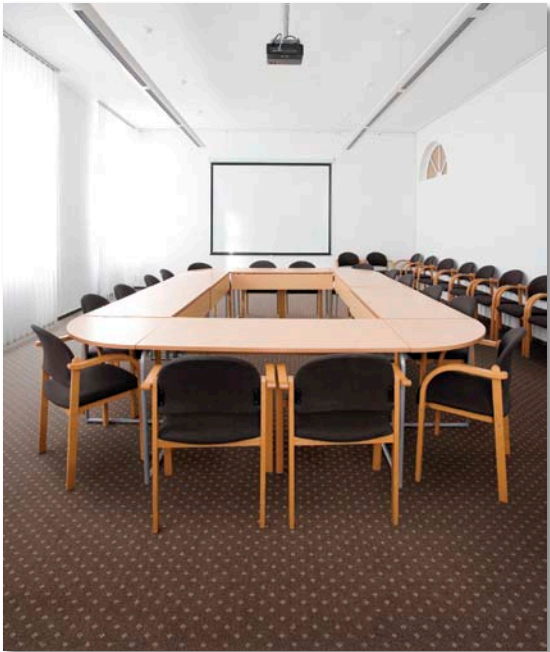
LIGHT FASTNESS: 5-6

WATER RESISTANCE: 4-5

FIRE CLASS: Fireresistance C_{fl}-s1 only with full adhesion



CHAMBORD UX+ / AB



MANUFACTURING PROCESS:
Tufting 5/64" printed cut pile

PILE CONTENT: 100% PA IMPREL®

PRIMARY BACKING: non woven PES

SECONDARY BACKING: Synthetic backing or Ultratex Quick+

PILE WEIGHT: ca. 630 g/m²

TOTAL WEIGHT: ca. 1.650 g/m² (AB)
ca. 1.700 g/m² (UX)

PILE HEIGHT: ca. 5 mm

TOTAL HEIGHT: ca. 7 mm

NUMBER OF KNOTS: ca. 378 000/m²

PERMANENTLY ANTISTATIC: <2 kV

SOUND INSULATION: ISO 140-8: ca 24 dB delta L (AB)
ISO 140-8: ca 29 dB delta L (UX)

SOUND ABSORPTION: ISO 354: ca 0.20 alpha w (AB)
ISO 354: ca 0.30 alpha w (UX)

THERMAL RESISTANCE: ca. 0,13 m² K/W (AB)
ca. 0,15 m² K/W (UX)

LIGHT FASTNESS: 5-6

WATER RESISTANCE: 4-5

FIRE CLASS: Fireresistance C_{fl}-s1 only with full adhesion



FORTESSE AB



MANUFACTURING PROCESS:
Tufting 1/10" cut pile COC

PILE CONTENT: 100% PA IMPREL®

PRIMARY BACKING: non woven PES

SECONDARY BACKING: Synthetic backing

PILE WEIGHT: ca. 730 g/m²

TOTAL WEIGHT: ca. 1.660 g/m²

PILE HEIGHT: ca. 4 mm

TOTAL HEIGHT: ca. 7 mm

NUMBER OF KNOTS: ca. 220 000/m²

PERMANENTLY ANTISTATIC: <2 kV

SOUND INSULATION: ISO 140-8: ca 24 dB delta L

SOUND ABSORPTION ISO 354: ca 0.20 alpha w

THERMAL RESISTANCE: 0,10 m² K/W

LIGHT FASTNESS: 5-6

WATER RESISTANCE: 4-5

FIRE CLASS: Fireresistance C_{fl}-s1 only with full adhesion



FORZA CRES



MANUFACTURING PROCESS:
Needle felt

PILE CONTENT: 100% PP

SECONDARY BACKING: Cres / Contract resine

PILE WEIGHT: ca. 900 g/m²

TOTAL WEIGHT: ca. 1.100 g/m²

PILE HEIGHT: ca. 7 mm

TOTAL HEIGHT: ca. 7 mm

PERMANENTLY ANTISTATIC: <1,9 kV

SOUND INSULATION: ISO 140-8: ca 22 dB delta L

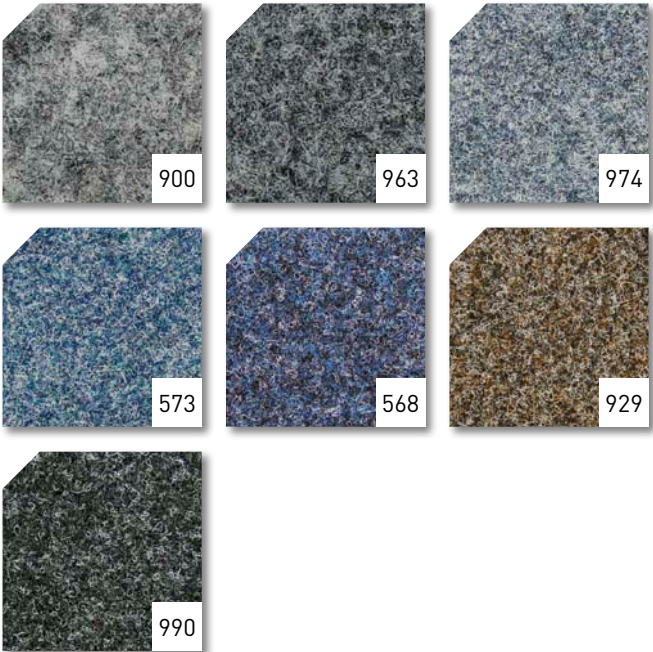
SOUND ABSORPTION ISO 354: ca 0.20 alpha w

THERMAL RESISTANCE: 0,11 m² K/W

LIGHT FASTNESS: 5-6

WATER RESISTANCE: 4-5

FIRE CLASS: Fireresistance C_{fl}-s1



FRASCATI AB



MANUFACTURING PROCESS:

Tufting 5/64" cut pile

PILE CONTENT: 100% PA IMPREL®

PRIMARY BACKING: non woven PES

SECONDARY BACKING: Synthetic backing

PILE WEIGHT: ca. 630 g/m²

TOTAL WEIGHT: ca. 1.650 g/m²

PILE HEIGHT: ca. 3 mm

TOTAL HEIGHT: ca. 5 mm

NUMBER OF KNOTS: ca. 421 000/m²

PERMANENTLY ANTISTATIC: <2 kV

SOUND INSULATION: ISO 140-8: ca 22 dB delta L

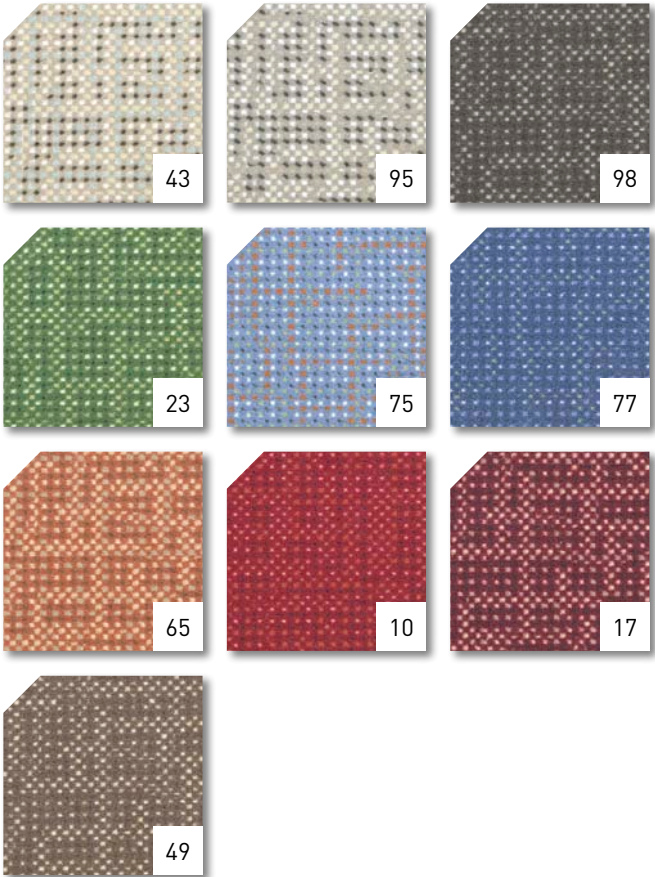
SOUND ABSORPTION ISO 354: ca 0.20 alpha w

THERMAL RESISTANCE: 0,09 m² K/W

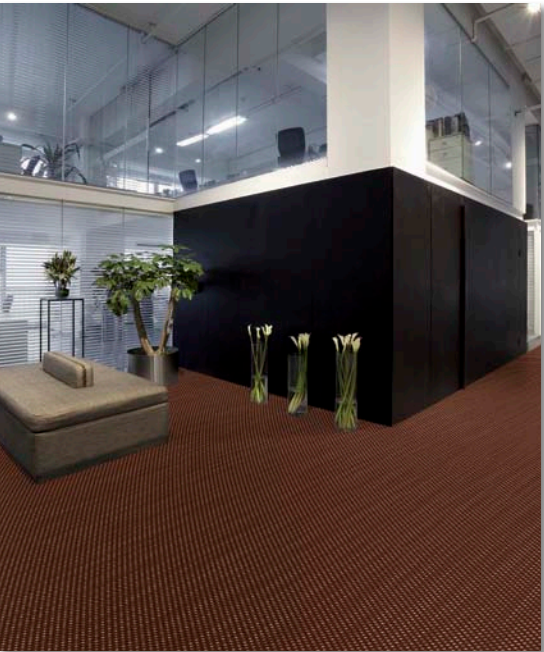
LIGHT FASTNESS: 5-6

WATER RESISTANCE: 4-5

FIRE CLASS: Fireresistance C_{fl}-s1



FRESCO AB



MANUFACTURING PROCESS:

Tufting 5/64" cut pile

PILE CONTENT: 100% PA IMPREL®

PRIMARY BACKING: non woven PES

SECONDARY BACKING: Synthetic backing

PILE WEIGHT: ca. 630 g/m²

TOTAL WEIGHT: ca. 1.650 g/m²

PILE HEIGHT: ca. 3 mm

TOTAL HEIGHT: ca. 5 mm

NUMBER OF KNOTS: ca. 421 000/m²

PERMANENTLY ANTISTATIC: <2 kV

SOUND INSULATION: ISO 140-8: ca 22 dB delta L

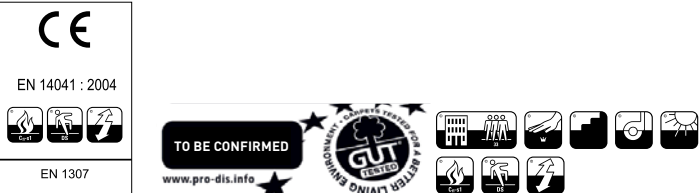
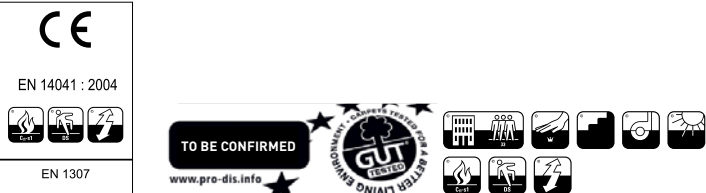
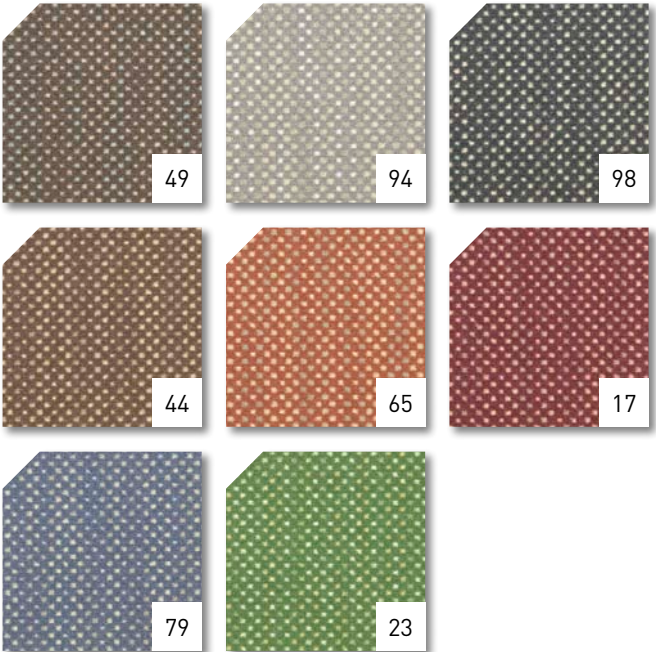
SOUND ABSORPTION ISO 354: ca 0.20 alpha w

THERMAL RESISTANCE: 0,09 m² K/W

LIGHT FASTNESS: 5-6

WATER RESISTANCE: 4-5

FIRE CLASS: Fireresistance C_{fl}-s1



MAESTRO AB



MANUFACTURING PROCESS:
Tufting 1/10" loop pile

PILE CONTENT: 100% PA IMPREL®

PRIMARY BACKING: non woven PES

SECONDARY BACKING: Synthetic backing

PILE WEIGHT: ca. 460 g/m²

TOTAL WEIGHT: ca. 1.500 g/m²

PILE HEIGHT: ca. 2 mm

TOTAL HEIGHT: ca. 4 mm

NUMBER OF KNOTS: ca. 205 000/m²

PERMANENTLY ANTISTATIC: <2 kV

SOUND INSULATION: ISO 140-8: ca 22 dB delta L

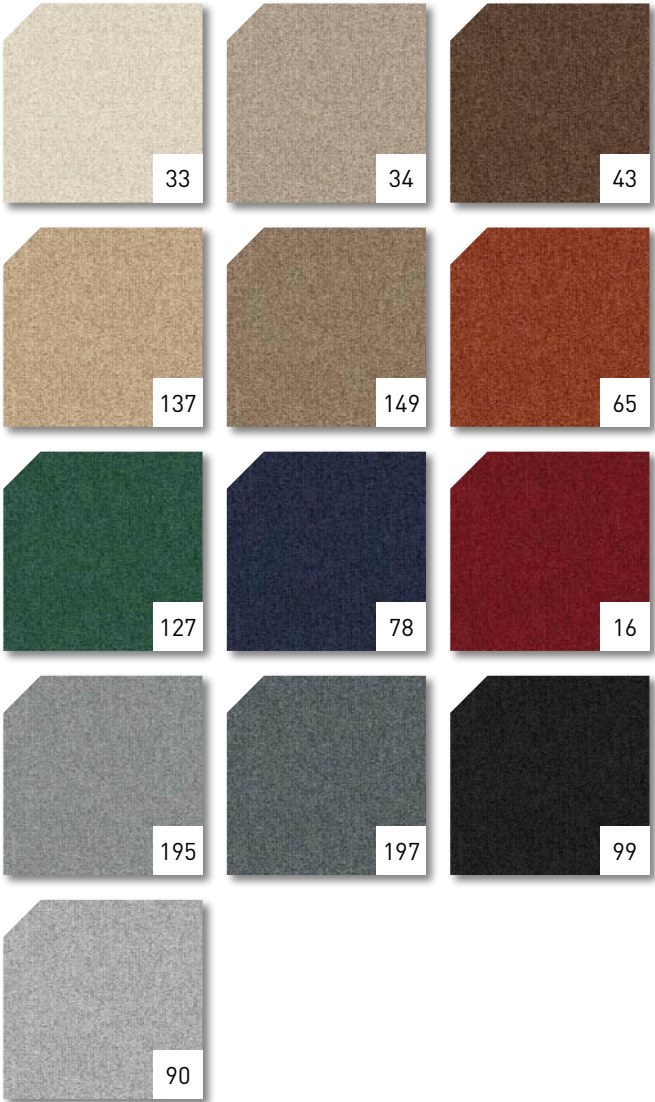
SOUND ABSORPTION ISO 354: ca 0.20 alpha w

THERMAL RESISTANCE: 0,07 m² K/W

LIGHT FASTNESS: 5-6

WATER RESISTANCE: 4-5

FIRE CLASS: Fireresistance C_{fl}-s1 only with full adhesion



MASTER AB



MANUFACTURING PROCESS:
Tufting 1/10" loop pile

PILE CONTENT: 100% PA IMPREL®

PRIMARY BACKING: non woven PES

SECONDARY BACKING: Synthetic backing

PILE WEIGHT: ca. 460 g/m²

TOTAL WEIGHT: ca. 1.500 g/m²

PILE HEIGHT: ca. 2 mm

TOTAL HEIGHT: ca. 4 mm

NUMBER OF KNOTS: ca. 205 000/m²

PERMANENTLY ANTISTATIC: <2 kV

SOUND INSULATION: ISO 140-8: ca 22 dB delta L

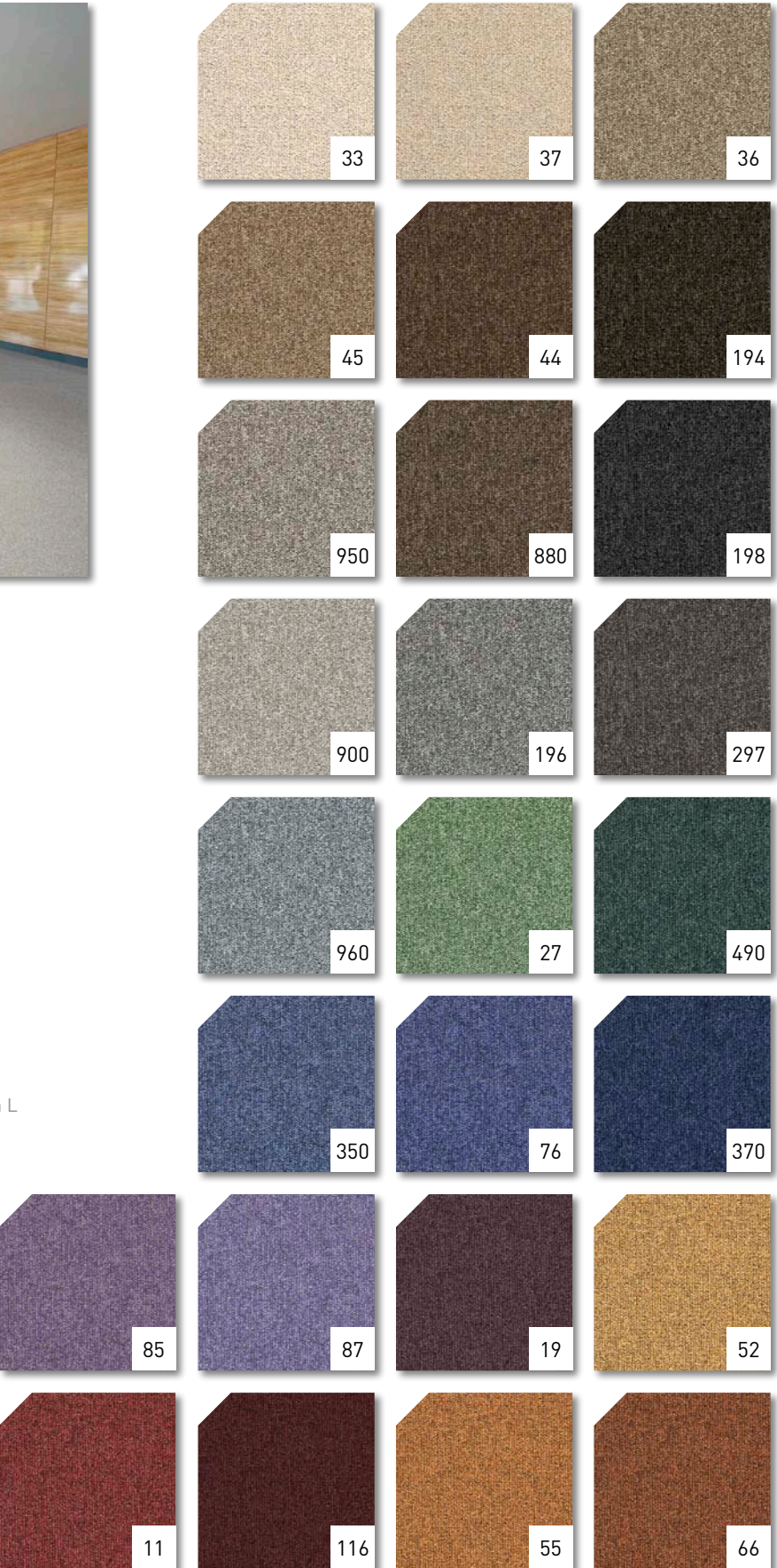
SOUND ABSORPTION ISO 354: ca 0.20 alpha w

THERMAL RESISTANCE: 0,07 m² K/W

LIGHT FASTNESS: 5-6

WATER RESISTANCE: 4-5

FIRE CLASS: Fireresistance C_{fl}-s1 only with full adhesion



MOZART AB



MANUFACTURING PROCESS:
Tufting 1/10" saxony

PILE CONTENT: 100% PA IMPREL®

PRIMARY BACKING: non woven PES

SECONDARY BACKING: Synthetic backing

PILE WEIGHT: ca. 900 g/m²

TOTAL WEIGHT: ca. 1.950 g/m²

PILE HEIGHT: ca. 5 mm

TOTAL HEIGHT: ca. 7 mm

NUMBER OF KNOTS: ca. 170 000/m²

PERMANENTLY ANTISTATIC: <2 kV

SOUND INSULATION: ISO 140-8: ca 24 dB delta L

SOUND ABSORPTION ISO 354: ca 0.20 alpha w

THERMAL RESISTANCE: 0,15 m² K/W

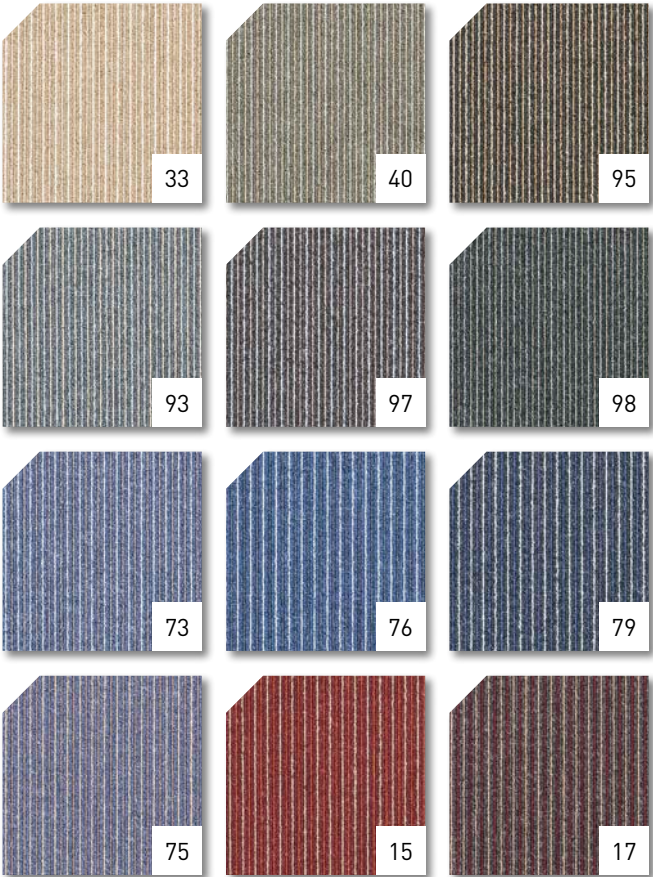
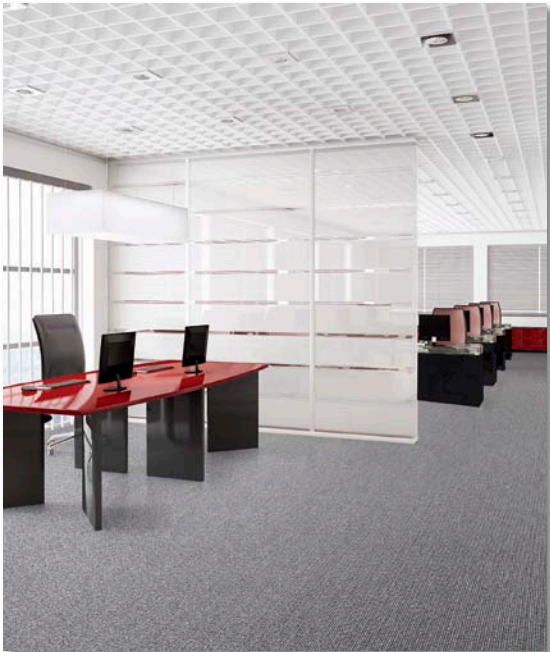
LIGHT FASTNESS: 5-6

WATER RESISTANCE: 4-5

FIRE CLASS: Fireresistance C_{fl}-s1 only with full adhesion



NOVASTRIPE AB



MANUFACTURING PROCESS:
Tufting 1/10" structured loop pile

PILE CONTENT: 100% PA IMPREL®

PRIMARY BACKING: woven PP

SECONDARY BACKING: Action Back

PILE WEIGHT: ca. 660 g/m²

TOTAL WEIGHT: ca. 1.880 g/m²

PILE HEIGHT: ca. 3 mm

TOTAL HEIGHT: ca. 5 mm

NUMBER OF KNOTS: ca. 224 500/m²

PERMANENTLY ANTISTATIC: <2 kV

SOUND INSULATION: ISO 140-8: ca 22 dB delta L

SOUND ABSORPTION ISO 354: ca 0.20 alpha w

THERMAL RESISTANCE: 0,11 m² K/W

LIGHT FASTNESS: 5-6

WATER RESISTANCE: 4-5

FIRE CLASS: Fireresistance C_{fl}-s1 only with adhesion



NOVAWEAVE AB



MANUFACTURING PROCESS:
Tufting 1/10" structured loop pile

PILE CONTENT: 100% PA IMPREL®

PRIMARY BACKING: woven PP

SECONDARY BACKING: Action back

PILE WEIGHT: ca. 660 g/m²

TOTAL WEIGHT: ca. 1.880 g/m²

PILE HEIGHT: ca. 3 mm

TOTAL HEIGHT: ca. 5 mm

NUMBER OF KNOTS: ca. 224 500/m²

PERMANENTLY ANTISTATIC: <2 kV

SOUND INSULATION: ISO 140-8: ca 22 dB delta L

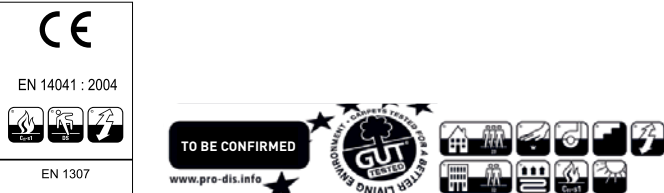
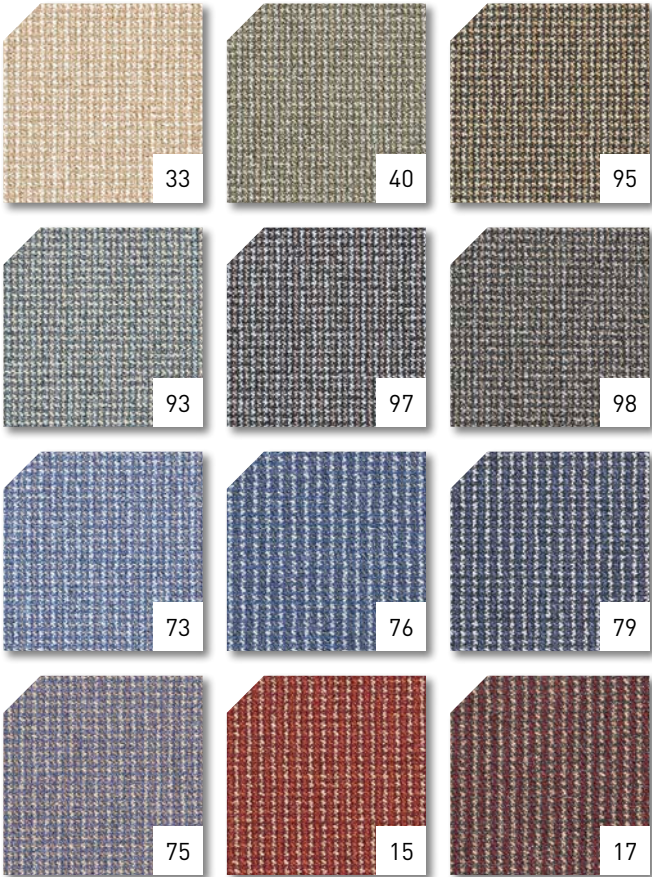
SOUND ABSORPTION ISO 354: ca 0.20 alpha w

THERMAL RESISTANCE: 0,11 m² K/W

LIGHT FASTNESS: 5-6

WATER RESISTANCE: 4-5

FIRE CLASS: Fireresistance C_{fl}-s1 only with full adhesion



OPTIMA AB



MANUFACTURING PROCESS:
Tufting 1/10" cut pile COC

PILE CONTENT: 100% PA IMPREL®

PRIMARY BACKING: woven PP

SECONDARY BACKING: Synthetic backing

PILE WEIGHT: ca. 750 g/m²

TOTAL WEIGHT: ca. 1.680 g/m²

PILE HEIGHT: ca. 4 mm

TOTAL HEIGHT: ca. 6 mm

NUMBER OF KNOTS: ca. 256 000/m²

PERMANENTLY ANTISTATIC: <2 kV

SOUND INSULATION: ISO 140-8: ca 25 dB delta L

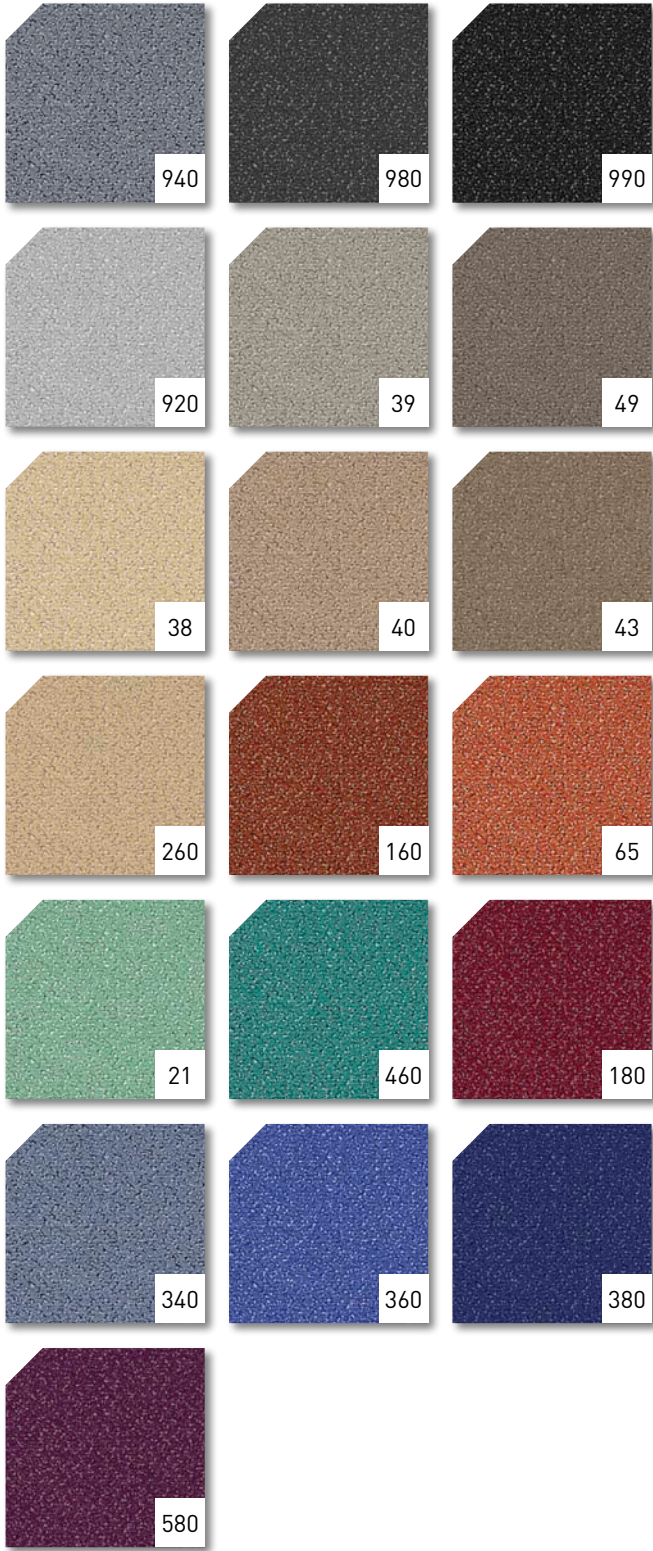
SOUND ABSORPTION ISO 354: ca 0.20 alpha w

THERMAL RESISTANCE: 0,11 m² K/W

LIGHT FASTNESS: 5-6

WATER RESISTANCE: 4-5

FIRE CLASS: Fireresistance C_{fl}-s1 only with full adhesion



PROMINENT AB



MANUFACTURING PROCESS:
Tufting 1/10" saxony

PILE CONTENT: 100% PA IMPREL®

PRIMARY BACKING: non woven PES

SECONDARY BACKING: Synthetic backing

PILE WEIGHT: ca. 1.150 g/m²

TOTAL WEIGHT: ca. 2.230 g/m²

PILE HEIGHT: ca. 5 mm

TOTAL HEIGHT: ca. 7 mm

NUMBER OF KNOTS: ca. 209 000/m²

PERMANENTLY ANTISTATIC: <2 kV

SOUND INSULATION: ISO 140-8: ca 26 dB delta L

SOUND ABSORPTION ISO 354: ca 0.20 alpha w

THERMAL RESISTANCE: 0,17 m² K/W

LIGHT FASTNESS: 5-6

WATER RESISTANCE: 4-5

FIRE CLASS: Fireresistance C_{fl}-s1only with full adhesion



QUARTIER AB



MANUFACTURING PROCESS:
Tufting 1/10" loop pile

PILE CONTENT: 100% PA IMPREL®

PRIMARY BACKING: woven PP

SECONDARY BACKING: Synthetic backing

PILE WEIGHT: ca. 480 g/m²

TOTAL WEIGHT: ca. 1.630 g/m²

PILE HEIGHT: ca. 4 mm

TOTAL HEIGHT: ca. 6 mm

NUMBER OF KNOTS: ca. 213 000/m²

PERMANENTLY ANTISTATIC: <2 kV

SOUND INSULATION: ISO 140-8: ca 22 dB delta L

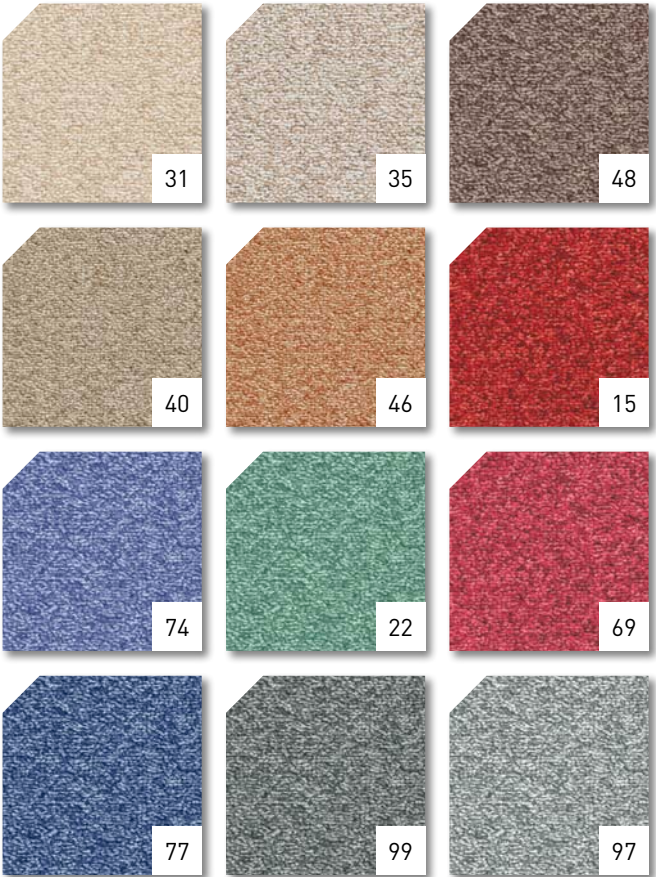
SOUND ABSORPTION ISO 354: ca 0.20 alpha w

THERMAL RESISTANCE: 0,11 m² K/W

LIGHT FASTNESS: 5-6

WATER RESISTANCE: 4-5

FIRE CLASS: Fireresistance C_{fl}-s1only with full adhesion



QUARTZ NEW AB



MANUFACTURING PROCESS:

Tufting 1/10" loop pile

PILE CONTENT: 100% PA IMPREL®

PRIMARY BACKING: woven PP

SECONDARY BACKING: Synthetic backing

PILE WEIGHT: ca. 540 g/m²

TOTAL WEIGHT: ca. 1.820 g/m²

PILE HEIGHT: ca. 3 mm

TOTAL HEIGHT: ca. 6 mm

NUMBER OF KNOTS: ca. 236 000/m²

PERMANENTLY ANTISTATIC: <2 kV

SOUND INSULATION: ISO 140-8: ca 22 dB delta L

SOUND ABSORPTION ISO 354: ca 0.20 alpha w

THERMAL RESISTANCE: 0,11 m² K/W

LIGHT FASTNESS: 5-6

WATER RESISTANCE: 4-5

FIRE CLASS: Fireresistance C_{fl}-s1 only with full adhesion



RAVEL AB



MANUFACTURING PROCESS:

Tufting 1/10" saxony

PILE CONTENT: 100% PA IMPREL®

PRIMARY BACKING: non woven PES

SECONDARY BACKING: Synthetic backing

PILE WEIGHT: ca. 900 g/m²

TOTAL WEIGHT: ca. 1.950 g/m²

PILE HEIGHT: ca. 5 mm

TOTAL HEIGHT: ca. 7 mm

NUMBER OF KNOTS: ca. 170 000/m²

PERMANENTLY ANTISTATIC: <2 kV

SOUND INSULATION: ISO 140-8: ca 24 dB delta L

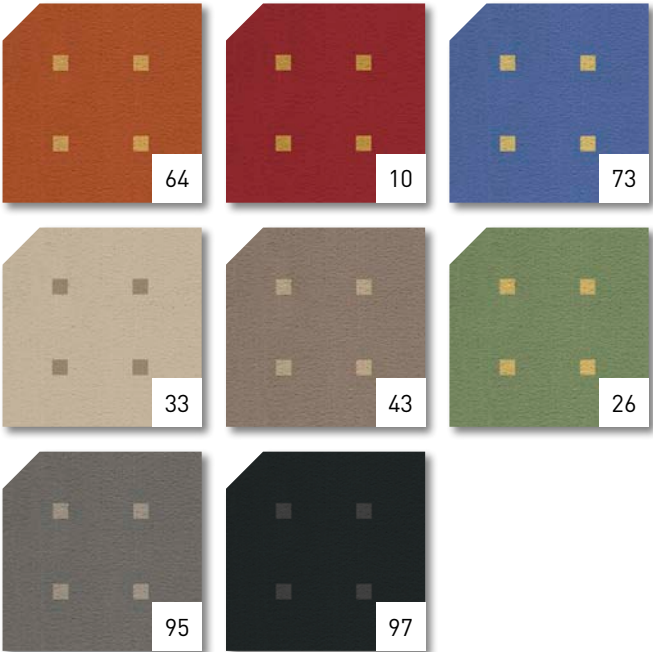
SOUND ABSORPTION ISO 354: ca 0.20 alpha w

THERMAL RESISTANCE: 0,15 m² K/W

LIGHT FASTNESS: 5-6

WATER RESISTANCE: 4-5

FIRE CLASS: Fireresistance C_{fl}-s1only with full adhesion





MANUFACTURING PROCESS:
Tufting 1/10" structured loop pile

PILE CONTENT: 100% PA IMPREL®

PRIMARY BACKING: woven PP

SECONDARY BACKING: Synthetic backing

PILE WEIGHT: ca. 660 g/m²

TOTAL WEIGHT: ca. 1.880 g/m²

PILE HEIGHT: ca. 3 mm

TOTAL HEIGHT: ca. 6 mm

NUMBER OF KNOTS: ca. 224 500/m²

PERMANENTLY ANTISTATIC: <2 kV

SOUND INSULATION: ISO 140-8: ca 22 dB delta L

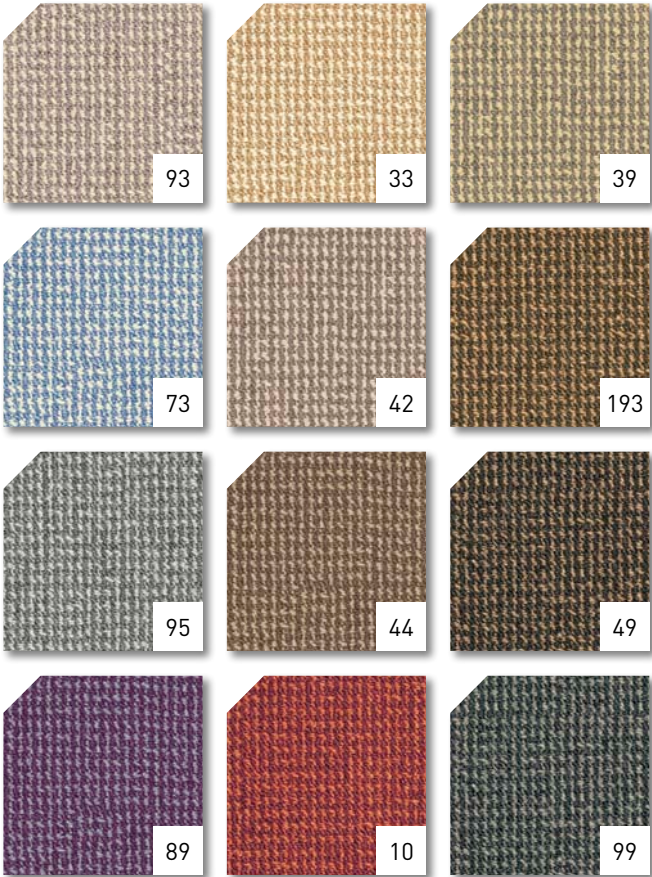
SOUND ABSORPTION ISO 354: ca 0.20 alpha w

THERMAL RESISTANCE: 0,11 m² K/W

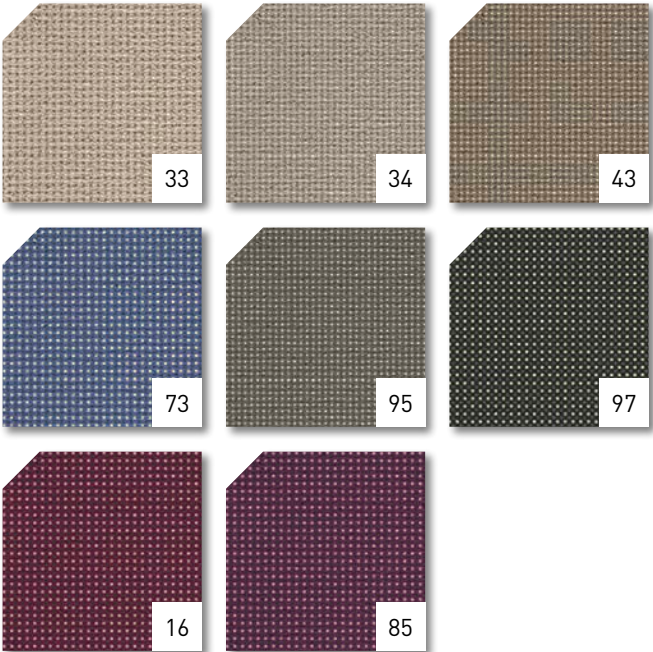
LIGHT FASTNESS: 5-6

WATER RESISTANCE: 4-5

FIRE CLASS: Fireresistance C_{fl}-s1 only with full adhesion



INSTALLATION ADVICE:
joints will be visible; if possible, please avoid joints



MANUFACTURING PROCESS:
Tufting 1/10" saxony

PILE CONTENT: 100% PA IMPREL®

PRIMARY BACKING: non woven PES

SECONDARY BACKING: Synthetic backing

PILE WEIGHT: ca. 900 g/m²

TOTAL WEIGHT: ca. 1.950 g/m²

PILE HEIGHT: ca. 5 mm

TOTAL HEIGHT: ca. 7 mm

NUMBER OF KNOTS: ca. 170 000/m²

PERMANENTLY ANTISTATIC: <2 kV

SOUND INSULATION: ISO 140-8: ca 24 dB delta L

SOUND ABSORPTION ISO 354: ca 0.20 alpha w

THERMAL RESISTANCE: 0,15 m² K/W

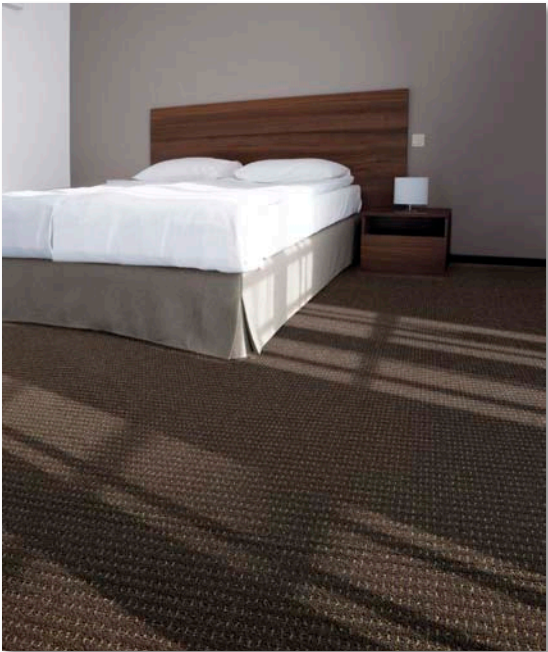
LIGHT FASTNESS: 5-6

WATER RESISTANCE: 4-5

FIRE CLASS: Fireresistance C_{fl}-s1only with full adhesion



SPLENDID AB



MANUFACTURING PROCESS:
Tufting 1/10" structured loop pile Scroll / Tipsheared

PILE CONTENT: 100% PA IMPREL®

PRIMARY BACKING: non woven PES

SECONDARY BACKING: Synthetic backing

PILE WEIGHT: ca. 1.020 g/m²

TOTAL WEIGHT: ca. 2.150 g/m²

PILE HEIGHT: ca. 6 mm

TOTAL HEIGHT: ca. 8 mm

NUMBER OF KNOTS: ca. 221 000/m²

PERMANENTLY ANTISTATIC: <2 kV

SOUND INSULATION: ISO 140-8: ca 26 dB delta L

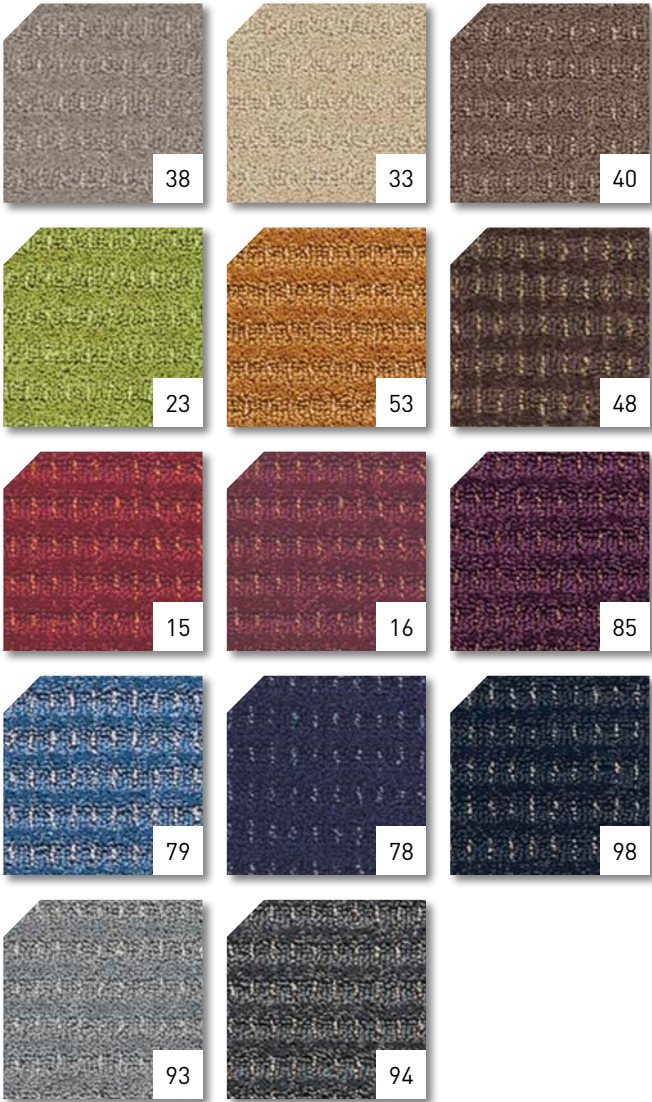
SOUND ABSORPTION ISO 354: ca 0.20 alpha w

THERMAL RESISTANCE: 0,09 m² K/W

LIGHT FASTNESS: 5-6

WATER RESISTANCE: 4-5

FIRE CLASS: Firerresistance C_{fl}-s1



SPONTINI AB



MANUFACTURING PROCESS:
Tufting 1/10" structured loop pile Scroll/Tipsheared

PILE CONTENT: 100% PA IMPREL®

PRIMARY BACKING: non woven PES

SECONDARY BACKING: Synthetic backing

PILE WEIGHT: ca. 1.100 g/m²

TOTAL WEIGHT: ca. 2.220 g/m²

PILE HEIGHT: ca. 6 mm

TOTAL HEIGHT: ca. 8 mm

NUMBER OF KNOTS: ca. 221 000/m²

PERMANENTLY ANTISTATIC: <2 kV

SOUND INSULATION: ISO 140-8: ca 26 dB delta L

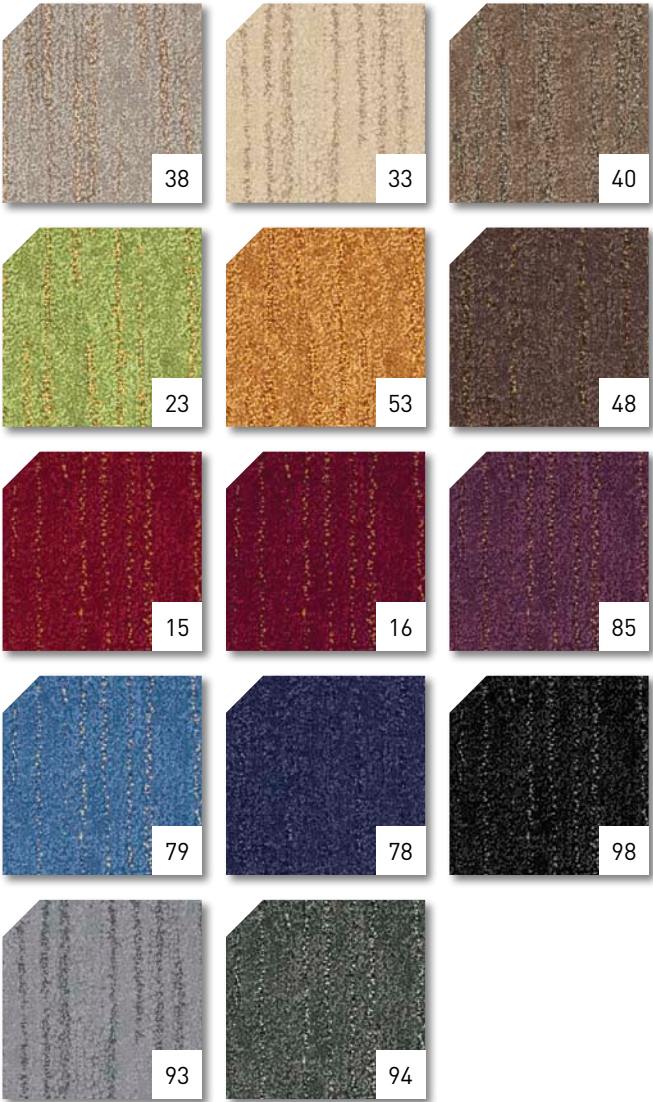
SOUND ABSORPTION ISO 354: ca 0.20 alpha w

THERMAL RESISTANCE: 0,09 m² K/W

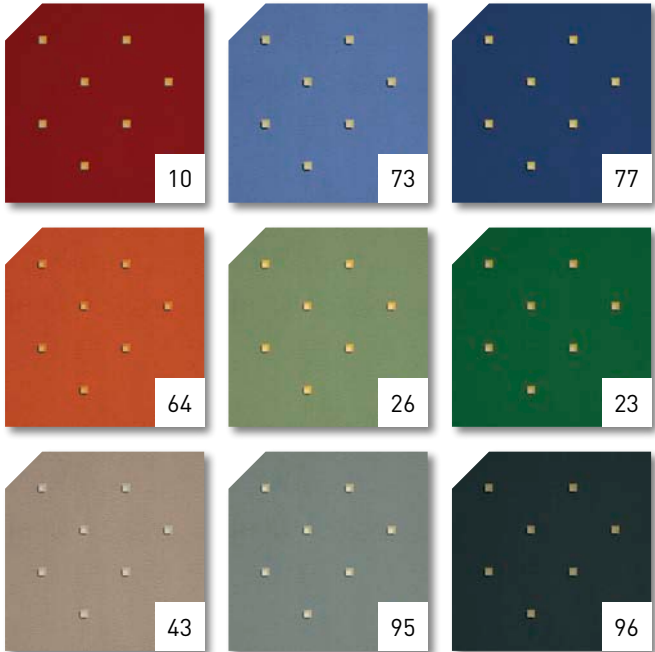
LIGHT FASTNESS: 5-6

WATER RESISTANCE: 4-5

FIRE CLASS: Firerresistance C_{fl}-s1 only with adhesion



STRAUSS AB



MANUFACTURING PROCESS:
Tufting 1/10" saxony

PILE CONTENT: 100% PA IMPREL®

PRIMARY BACKING: non woven PES

SECONDARY BACKING: Synthetic backing

PILE WEIGHT: ca. 900 g/m²

TOTAL WEIGHT: ca. 1.950 g/m²

PILE HEIGHT: ca. 5 mm

TOTAL HEIGHT: ca. 7 mm

NUMBER OF KNOTS: ca. 170 000/m²

PERMANENTLY ANTISTATIC: <2 kV

SOUND INSULATION: ISO 140-8: ca 24 dB delta L

SOUND ABSORPTION ISO 354: ca 0.20 alpha w

THERMAL RESISTANCE: 0,15 m² K/W

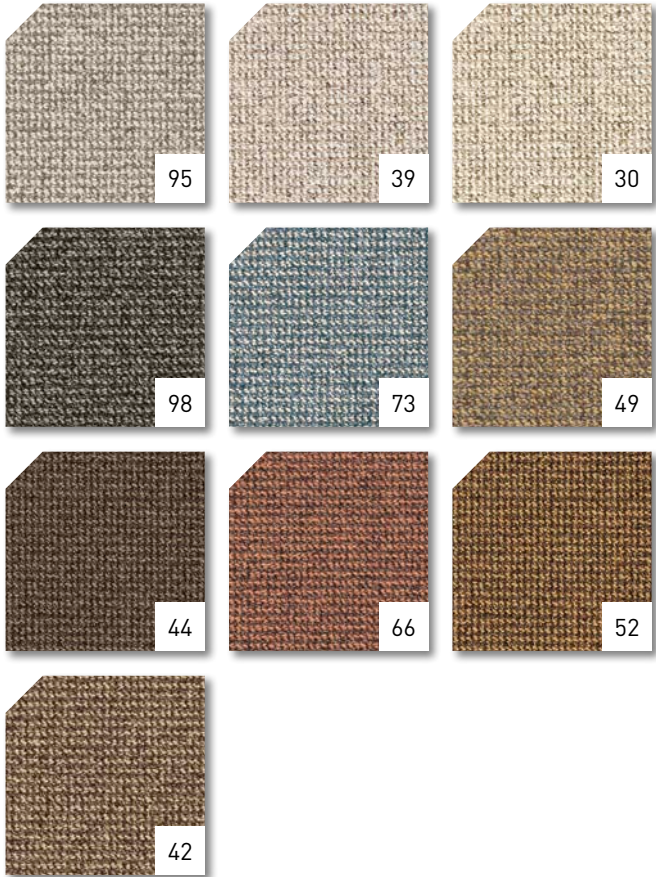
LIGHT FASTNESS: 5-6

WATER RESISTANCE: 4-5

FIRE CLASS: Firerestance C_{fl}-s1 only with full adhesion



TWEED AB



MANUFACTURING PROCESS:
Tufting 1/10" structured loop pile

PILE CONTENT: 100% PA IMPREL®

PRIMARY BACKING: woven PP

SECONDARY BACKING: Synthetic backing

PILE WEIGHT: ca. 680 g/m²

TOTAL WEIGHT: ca. 1.790 g/m2

PILE HEIGHT: ca. 4 mm

TOTAL HEIGHT: ca. 6 mm

NUMBER OF KNOTS: ca. 225 000/m²

PERMANENTLY ANTISTATIC: <2 kV

SOUND INSULATION: ISO 140-8: ca 22 dB delta L

SOUND ABSORPTION ISO 354: ca 0.20 alpha w

THERMAL RESISTANCE: 0,11 m² K/W

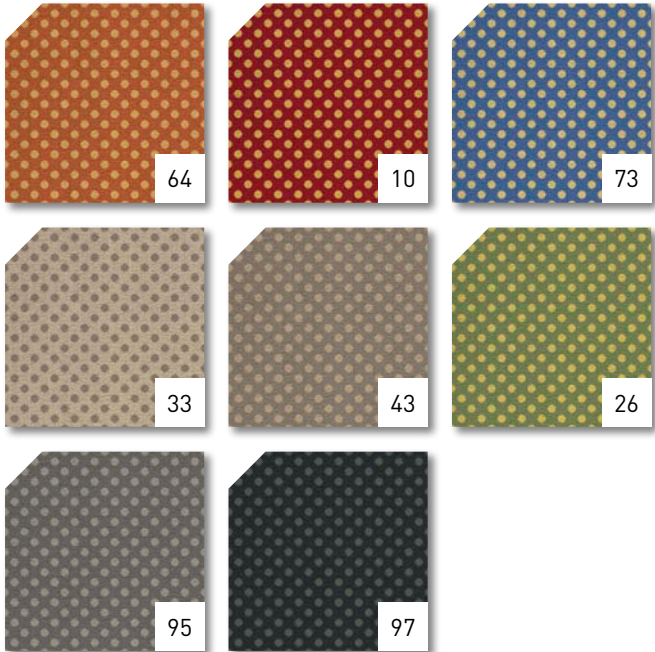
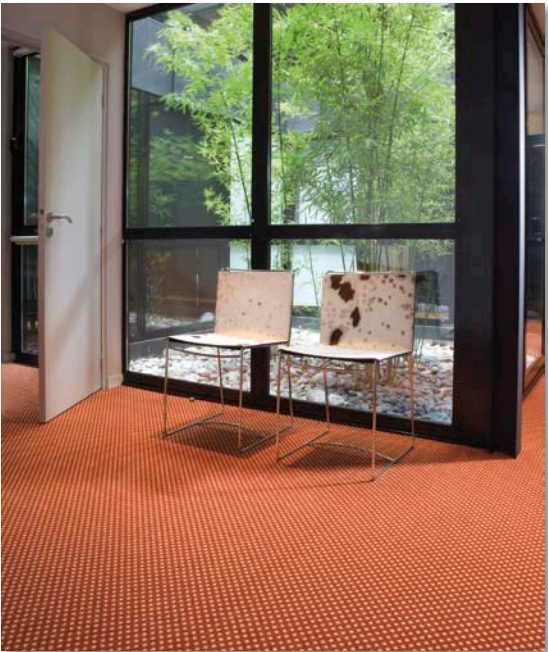
LIGHT FASTNESS: 5-6

WATER RESISTANCE: 4-5

FIRE CLASS: Firerestance C_{fl}-s1 only with full adhesion



VERDI AB



MANUFACTURING PROCESS:

Tufting 1/10" saxony

PILE CONTENT: 100% PA IMPREL®

PRIMARY BACKING: non woven PES

SECONDARY BACKING: Synthetic backing

PILE WEIGHT: ca. 900 g/m²

TOTAL WEIGHT: ca. 1.950 g/m²

PILE HEIGHT: ca. 5 mm

TOTAL HEIGHT: ca. 7 mm

NUMBER OF KNOTS: ca. 170 000/m²

PERMANENTLY ANTISTATIC: <2 kV

SOUND INSULATION: ISO 140-8: ca 24 dB delta L

SOUND ABSORPTION ISO 354: ca 0.20 alpha w

THERMAL RESISTANCE: 0,15 m² K/W

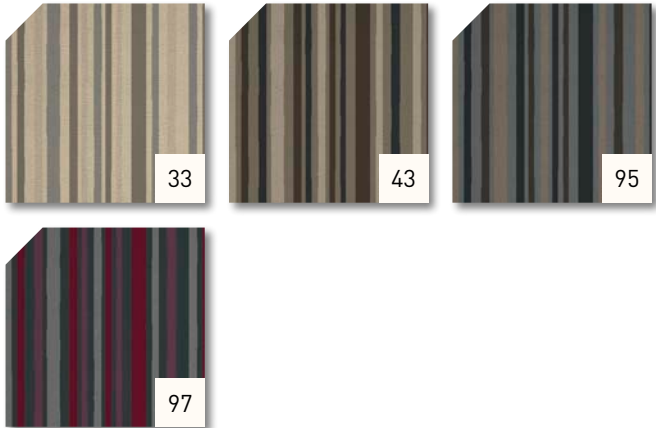
LIGHT FASTNESS: 5-6

WATER RESISTANCE: 4-5

FIRE CLASS: Fireresistance C_{fl}-s1 only with full adhesion



VIVALDI AB



MANUFACTURING PROCESS:

Tufting 1/10" saxony

PILE CONTENT: 100% PA IMPREL®

PRIMARY BACKING: non woven PES

SECONDARY BACKING: Synthetic backing

PILE WEIGHT: ca. 900 g/m²

TOTAL WEIGHT: ca. 1.950 g/m²

PILE HEIGHT: ca. 5 mm

TOTAL HEIGHT: ca. 7 mm

NUMBER OF KNOTS: ca. 170 000/m²

PERMANENTLY ANTISTATIC: <2 kV

SOUND INSULATION: ISO 140-8: ca 24 dB delta L

SOUND ABSORPTION ISO 354: ca 0.20 alpha w

THERMAL RESISTANCE: 0,15 m² K/W

LIGHT FASTNESS: 5-6

WATER RESISTANCE: 4-5

FIRE CLASS: Fireresistance C_{fl}-s1 only with full adhesion



CHROMOJET TAILOR MADE

This collection offers contract carpets that are digitally printed with latest high-resolution Chromojet technology in the designs and colours of your choice to match the requirements of your project.

The designs are realized on 6 different high-performing carpets certified with usage class 33 or usage class 32.

B CREATIVE

**Design flooring : Creativity without limits.
Create your own design and colour.**

- Possibility to create own individual designs and have them printed on high-quality carpet
- 51 design-/colour-combinations on stock
- More than 600 design-/colour-combinations available on demand
- Up to 5 meter width

For all your personalized projects, register the specifications online on www.arcedition.com or contact one of our edition sales representative to get a detailed product offer and price quotation.

CHROMOJET TECHNOLOGY

Chromojet is a printing system using high speed valves which are computer controlled. The pre-mixed pressurized spot colors are injected with high precision deep into the face of the pile without any machine parts touching the fabric. This results in deepest color penetration and excellent print definition.

ADVANTAGES OF THE ITC CHROMOJET TECHNOLOGY

- No screens
- No limitation in pattern repeats
- Design change „on the fly“
- Full colour penetration
- High Resolution
- Colour banks of 12 colours
- Up to 5 m width

CARPET PRINTING ... CREATIVITY WITHOUT LIMITS



WEBSITE & APP

arc edition® provides a wide-choice of in-stock textile floorcoverings suitable for use in demanding commercial environments with the Service collection, as well as the freedom and unlimited potential of Tailor Made bespoke carpet creations.



FEATURES

- Selection of high-quality in-stock commercial carpet
 - Styles and colours for wide-ranging applications
 - Access a comprehensive in-stock programme
 - Purchase high-technology Chromojet printed carpet
 - Submit personalised patterns or colours
 - Download section featuring tech specs, certificates, references and guidelines
- Order free samples dispatched the next working day

The SERVICE collection provides a wide choice of on-stock textile floor coverings designed for professional use.

- Selection of best selling performance carpets
- A wide choice of aspects, colours, application areas
- On-stock as roll or cut-length

The TAILOR MADE collection offers unlimited possibilities to create individual carpets.

- Carpets printed with latest Chromojet technology
- Floor designer tool showing 600 colour/design combinations
- Possibility to submit own design or special colours

Updated on a regular basis to reflect new input as well as to remain in-line with shifts in trends, arc edition® is a serious resource of carpet inspiration that is always current

SUSTAINABILITY STATEMENT BALTA GROUP

Sustainability is not just a word within the Balta Group. It's about preserving our environment for future generations and valuing our customers, employees and shareholders. Please read the following pages to find out more about our activities as well as our value proposition to customers.

SOCIAL COMMITMENT

The Balta Group expects all its business to be conducted in compliance with high ethical standards of business practice and is applying these standards to all dealings with employees, customers, suppliers and other stakeholders.

Business is conducted in adherence with high ethical and legal principles relating to:

- All employees having the right and responsibility to ensure compliance to the principles described above
- Discrimination or harassment
- Bribery and corruption
- Conflict of interest
- Community
- Whistleblowing

SUSTAINABLE PRODUCTION

LEAN manufacturing – ISO 9001 certified

The Balta Group has vertically integrated, state-of-the-art, production plants and is constantly looking to improve operations on all levels applying the principles of 'LEAN' manufacturing. Balta is ISO 9001 certified and a Total Quality Management system in our production plants guarantees safe products that perform well. We look for leveraging synergies where possible and rationalize our product portfolios. Our goal is to maximize customer satisfaction.

Environmental policy – ISO 14001 certified

BALTA IS COMMITTED TO:

- comply with all applicable legal requirements and any other requirements that have been approved by the organization and which relate to the environmental aspects of the company. E.g. CE marking & REACH create a framework for the permanent determination, assessment and improvement of the environmental objectives and the environmental assignment proposal
- permanently improve and prevent environmental pollution

THIS IS TRANSLATED INTO THE FOLLOWING MANAGEMENT OBJECTIVES:

- to carry out all economically sound energy-reducing measures
- to reduce water consumption, to reduce water discharge and to assess the re-use of water
- to take anti-noise measures in case of transgression of the legal norms
- to draw up the list of unclean water streams and to reduce them continually
- to avoid soil pollution

The environmental targets must be achieved by the constant updating and the focused application of the ISO 14001-system, whereby the company commits itself to make the necessary resources available.

Addressing climate change

In 2004 the Balta Group concluded a so-called 'benchmark covenant' with the Flemish Government. Starting with the goals laid down in the Kyoto protocol to reduce CO2 emission drastically, a phased plan was worked out to implement energy saving measures in all Balta's production sites. All production processes are optimized for energy use and after several audits by external energy consultants concrete steps were taken such as better insulation of steam pipes, replacement of engines and lighting by more energy friendly alternatives, gas driven generators for electricity with heat recuperation and the optimisation of ovens to mention just a few examples.

Green energy

Balta has invested in 3 solar energy projects with in total 50.000 solar panels on 271.000m2 (54 football pitches) of factory roof. The production of this renewable green energy will allow to reduce CO2 emissions with 95 Mio kg in the next 20 years. In this way we are reducing our ecological footprint.

Steps were also taken to reduce drastically the quantities of production waste and to sort it better. This makes it possible to enable the recycling of certain materials.

Clean water

In the same year a water purification installation was built in Sint-Baafs-Vijve for the treatment of water used in production. In 2000 a similar installation followed in ITC in Tiel. Both installations are constantly being followed up in order to satisfy the discharge standards for surface water. Water saving measures were taken to reduce both the use of ground water and the discharge of water.

Balta is a member of GUT

GUT = Gemeinschaft Umweltfreundlicher Teppichboden, is an industry partnership that aims to reduce environmental impacts and ensure product safety at every stage of a carpet's life cycle. We send all our products to GUT for testing and certification to ensure they meet strict safety standards on factors such as levels of volatile organic compounds (VOC) and hazardous substances.

THE GUT LICENSE NUMBER IS EVIDENCE OF TESTING FOR:

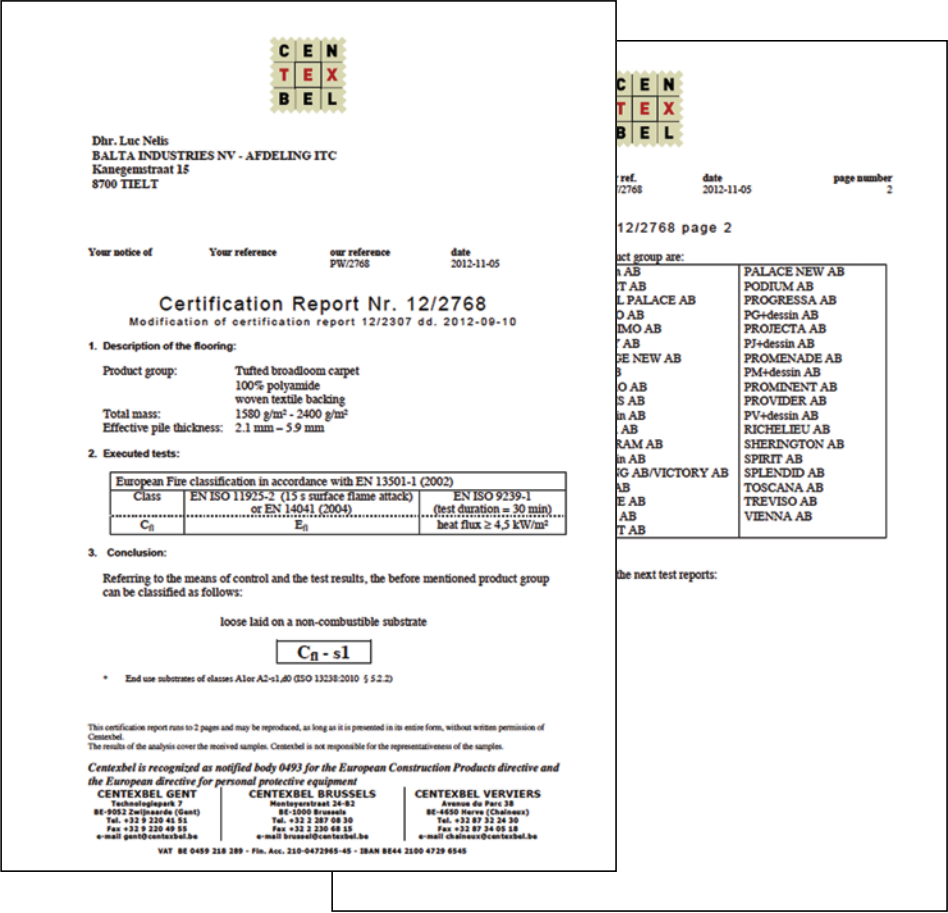
- Environmentally compatible production
- Compliance with GUT's test criteria on hazardous substances
- Minimal emissions and odours in new carpets

Environmental Product Declarations (EPDs)

We provide harmonized EPDs in accordance with ISO 14025 for our products. The process to establish EPD's involves the sending of production and raw materials data to GUT to make the calculation consistently. These are then verified by the Institut Bauen und Umwelt (IBU) and are valid for a period of three years from the date of issue exclusively for the product group indicated and only in conjunction with a valid PRODIS license.



CERTIFICATES



Balta Industries is ISO 9001 & ISO 14001 certified. All ranges comply with the Strictest standards on health & safety (CE, GUT, DIBT abz, EU Fire certificates) and product performance (EN 1307).

MAINTENANCE

arc edition® carpets are designed for best wear performance. The adequate maintenance will keep the aspect and durability for years to come. Before talking about maintenance please consider the following advice:

THE DAILY MAINTENANCE

To ensure the beauty and aspect of your carpet as long as possible, we recommend to vacuum the soil removing mats as well as the carpet on a daily basis. The vacuum cleaners used must be equipped with a rotating brush or a beater-bat to guarantee an easy removal of soil and dust.

THE STAIN REMOVAL

The removal of stains or soil should be part of the daily maintenance. The 4 basic rules for maintenance are:

- 1. Always treat stains immediately. The faster you treat a stain, the easier you can remove it.
- 2. Always work from the edges towards the centre of the stain, to avoid a spreading of the spot.
- 3. Never rub! This may damage carpet fibres.
- 4. Use only appropriate products to remove stains. We recommend testing the method on a sample or carpet rest.

INTERMEDIATE CLEANING:

This maintenance includes the thorough cleaning of the pile surface. It does not replace the basic cleaning. The intermediate cleaning should be executed minimum once a year and be subcontracted to a professional carpet cleaning service. We recommend testing the cleaning method on a sample or carpet rest. There are 3 methods : dry cleaning, shampooing and spray extraction.

Dry cleaning: Dry cleaning of the carpet does not involve any waiting times. Carpet can be re-used immediately. The cleaning powder will be applied onto the carpet and evenly spread. Soil will be soaked up by the powder. After a short waiting time the powder can be vacuumed.

WALK-OFF ZONES:

A carpet needs to be protected from soil, especially in entrance areas or problem areas, such as floor zones with hard floors and carpet. The installation of walk-off zones with soil removing carpet mats is strongly recommended.

Shampooing: The shampoo is applied onto the surface and has to be massaged into the carpet pile. Soil and stains are taken up by the shampoo. This substance must then be extracted from the carpet by a water vacuum machine. After a waiting time of ca. 5 hours, the carpet has to be hovered again.

Spray Extraction: The spray extraction is a very thorough method of cleaning large carpet surfaces. It needs to be executed by a professional carpet cleaner. Spray extraction should be tested on a sample or rest of the carpet installed.

QUALITY SYMBOLS

FIRE CLASSIFICATION

All products in this collection are offering **C_{FL}-S1** according to the european standard **EN 13501-1**.



USAGE CLASS

These symbols indicate the usage class. All products featured in this collection are classified as suitable for contract use.

- Medium contract | hotel rooms



- Heavy contract | offices, shops



- Extreme contract | public halls, corridors



ADDITIONNAL FEATURES

- antistatic
- slip resistant
- suitable for underfloor heating
- suitable for stairs (contract)
- suitable for stairs (domestic)
- suitable for castor chairs (contract)
- suitable for castor chairs (domest.)



CE-LOGO

All products in this collection are in conformity with the european norms **EN 14041:2004** and **EN 1307** as shown in the **CE - LABEL** (printed under every feeler sample of this collection)



CERTIFIED PRODIS

In collaboration with independent laboratories, all products are tested and classified based on the applicable european norms.



CERTIFIED GUT /

In cooperation with officially recognized European test laboratories registered products are regularly controled on the basis of GUT's test criteria. The intensive product testing on chemicals and emissions is the basis for ensuring consumer safety.



SUITABLE FOR

Tested and certified by TÜV-Nord (german institute).



CREATIVE CONTRACT SOLUTIONS

SAFE STEP

Carpet is very safe and avoids slipping



SILENCE AND

Carpet absorbs noise and improves the acoustics



ENERGY SAVING /

Carpet helps to save up to 12% of heating costs



PROTECT PLUS

Anti-soil treatment for easy maintenance



Strength and elasticity! made from 100% polyamide IMPREL® for better wear performance



INSTALLATION GUIDE

FUNDAMENTALS

1. Always check before fitting that the carpet supplied does correspond to the requested specifications (colour, width...)
2. Provide for a detailed fitting-plan before starting to cut the carpet.
3. Make sure that the substrate complies to the following requirements: it must be level, dust and grease free, shock and crush proof, dry. The surface is dry when it contains a maximum of 3% moist, as measured with a CM sensor device. If required, the surface will need to be repaired and leveled at least 24 hrs in advance.
4. It is strongly recommended to let the carpet rest before fitting. Before, during and after fitting the referred room temperature should be at least 15° C and the relative moisture must not exceed 30-60%.
5. It is recommended to completely glue the carpet using adhesives showing the EC1 label: these adhesives are environmentally friendly with a low degree of emissions and free of solvents. For more information on these topics, please contact your supplier.
6. It is essential to fit the carpet in the same direction. It is therefore very important to check the pile direction before fitting. To be absolutely sure about the pile direction, please proceed as follows:
Put a sheet of paper on the carpet Put a pen on the sheet of paper Pressurize the pen ;roll it back and forth The direction in which the paper will move is the pile direction

SUBFLOOR PREPARATION

Whatever the subfloor is, before work commences the fitter should ensure that it meets the following criteria:

- structurally sound and level
- free of any cracks
- permanently dry: prevent moisture affecting the dimensional stability of the carpet and to guard against rot
- surface has to be firm and stable
- smooth: prevent any telegraphing of indentations and ridges through the surface
- enough expansion joints
- on the same level as joining rooms
- clean and free of all contaminants (dust, grease, oil, paint and plaster)
- adequate surface temperature
- adequate room temperature
- if an underfloor heating system is present, it must operate within controlled temperatures
Irregular subfloors can be corrected by using the appropriate smoothing compound.

Most subfloors will require priming. The type and condition of the subfloor has a direct influence on the installation and performance of a carpet with Action Back and the importance of subfloor preparation cannot be emphasized too strongly.

For further information request the subfloor preparation guide of your adhesive producer where you will find detailed information on how to prepare the subfloor and which products should be used.

INSTALLATION METHODS

Carpets for contract use can be fitted in 2 different ways:

- complete adhesion
- by stretching with carpet gripper (for carpets with Action Back only)

Complete adhesion

It is recommended to completely glue the carpet using adhesives showing the EC1 label: these adhesives are environmentally friendly with a low degree of emissions and free of solvents. For more information on these topics, please contact your supplier.

Spread the adhesive with a notched trowel evenly over the subfloor. We advise using a trowel with fine notching in order to apply a minimum of adhesive what will facilitate the removal of the carpet afterwards. After the waiting time, lay the carpet into the adhesive and press firmly to ensure overall contact with the adhesive.

If there are seams, we advise always to stick the seams down with a dispersion adhesive.
Before seaming commences, make sure that the edges are butt-joined together perfectly. Cut the carpet pieces along the knots using a knife with hooked blade. Close the seam and check, before applying the adhesive, the matching and the design repeats of both carpet pieces.
Fold both carpet pieces back and apply the dispersion adhesive with a notched trowel evenly over the subfloor. After the recommended waiting time, lay the carpet into the adhesive and press firmly to ensure overall contact of the Action Back with the adhesive. Close the seam and trim the carpet at the walls

Cross seams - Cross seams have to be avoided. All construction threads are cut in the process of making cross seams. If cross seams are necessary, they will be clearly visible and should be covered with a covering profile.
Carpets may only be fitted on staircases using a full stick



down method with a solvent free dispersion adhesive recommended for stairs. Always consult first the instructions of the adhesive manufacturer in order to find out which adhesive to use.
Before starting to fit a carpet on a stair-case, we recommend to apply an adhesive coating on the back of the carpet with a flat trowel. Allow this coating to dry before you start sticking the carpet on the staircase.
This prevents too much of the adhesive to be taken up by the carpet backing.

Measure how long the carpet should be to cover both tread and riser and cut with a hooked blade knife the carpet pieces that you need.

Apply the contact adhesive evenly over the tread and riser of the

upper step with a notched trowel.
If certain corners of the steps are difficult to reach with a trowel, you can also use a normal brush to apply the adhesive.

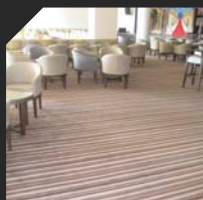
After the recommended waiting time, the carpet can be laid into the adhesive of the upper step and firmly pressed.
Stretch the carpet perfectly over the stair-nose, using pincers, and press it firmly in the contact adhesive of the riser.

Finally you can trim the carpet at the bottom of the riser.
Fit the carpet in the same way on the remaining steps and you will get a superb result on your staircase.

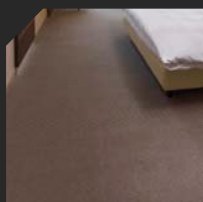
SOME REFERENCES



References Schubert:
Restaurant Maelstede, Kuurne, Belgium



References Special on projecta:
Hotel Palmazur, Djerba



References Special on promenade:
Hotel Mercure, Hamm, Germany



References PM Ristretto:
Hotel Van der Valck, Maastricht, Netherlands



References Special on promenade:
Hotel Mercure, Wellington, New Zealand



visit: www.arcedition.com

arc edition®
performance flooring
by Balta

Balta Industries nv - Division ITC
Kanegemstraat 15 - B-8700 Tielt - Belgium
T +32 (0)51 42 44 11 - F +32 (0)51 42 44 85
contract@baltagroup.com - www.baltagroup.com